

CONSTANT PRESSURE ADVERTISING SCREEN VENTO®

INCLUDED



x 4

straight pin with eyelet
and extraction ropes



x 2

straight pin with eyelet



x 1

mounting hammer



x 1

valve key



x 1

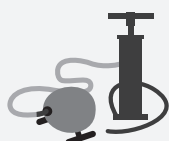
repair set



x 1

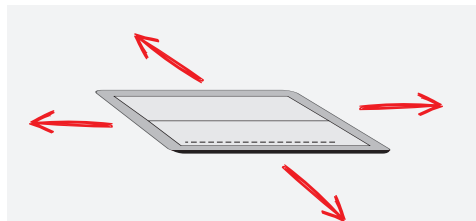
transport bag

NEEDED

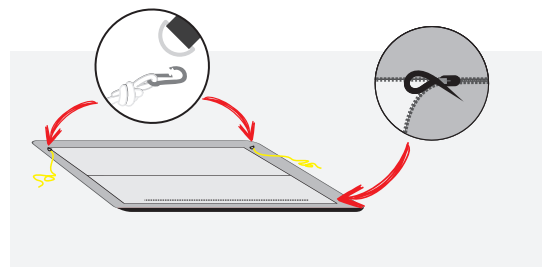


electric pump

ASSEMBLY INSTRUCTIONS



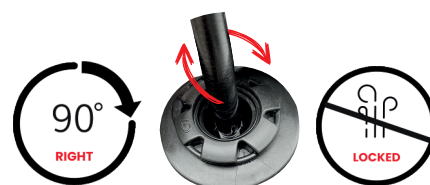
- 1 Lay out the screen on a flat and dry surface. If possible, use a sheet to avoid soiling the cover.



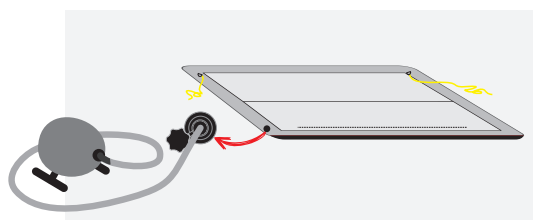
- 2 Attach the lines to the lashing eyes in the screen and unfasten the lower cover lock.



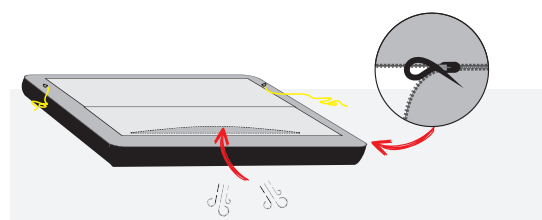
- 3 Find the inflate/deflate valve and unscrew the nut.



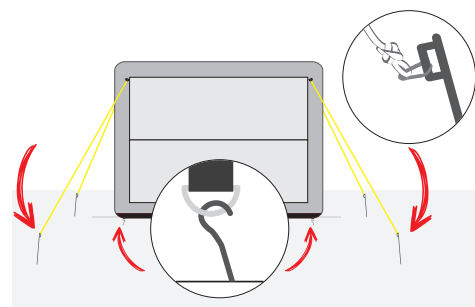
- 4 Lock the valve by turning the diaphragm needle by turning the needle of the diaphragm about 90° to the right with the dedicated key, this prevents air escaping. An unblocked valve will bleed air from the product!



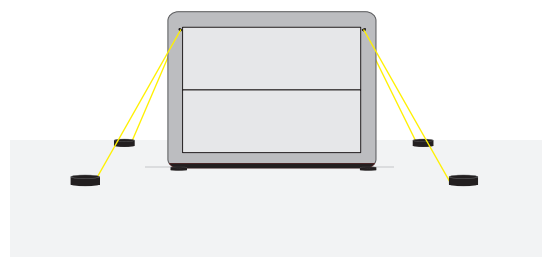
- 5 Connect the pump to the screen and wait until the screen fills with air.



- 6 Hold the zipper open for a moment to replenish the air inside and tighten the cover. Then fasten the zipper.



- 7 Stand the screen up using the cables and secure to the ground with pins using a hammer. The cables should be taut and stretched to their full length. Finally fix the pins to the lashings at the base of the



- !** For substrates that do not allow the use of pins/anchors, dedicated weights or weight bags should be used for the cables and bottom lashings at the base.

CONSTANT PRESSURE ADVERTISING SCREEN VENTO®

INCLUDED



x 4

straight pin with eyelet
and extraction ropes


x 2

straight pin with eyelet



x 1

mounting hammer



x 1

valve key



x 1

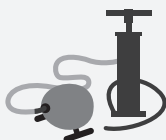
repair set



x 1

transport bag

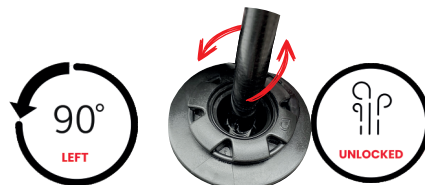
NEEDED



electric pump

DISASSEMBLY INSTRUCTIONS

- 1 Remove all anchors/pins from lashing lines and lashings.
- 2 Place the product on a flat and dry surface. Use a protective sheet if possible.
- 3 Find the inflate/deflate valve and unscrew the nut.
- 4 Unlock the valve by turning the diaphragm needle by about 90° to the left and start pumping the air out of the product.
- 5 Assemble and pack the fitting kit into the accessory bag.
- 6 Roll the product towards the inflate/deflate valves into a built-up bag or pack it into a dedicated carry bag.



INSTRUCTIONS OF USE

1. Please read the product assembly/disassembly instructions before assembly.
2. When transporting, setting up and assembling the product, take special care to avoid damage to the product or injury during assembly.
3. Before disassembling the product, ensure that there are no sharp objects, tools, etc. with sharp edges in the area where the product will be assembled.
4. If using an electric pump, check the condition of the wires before connecting to the voltage to avoid electric shock.
5. Do not obstruct the safety valves that regulate the air pressure in the product.
6. During increasing gusts of wind, systematically check the seating of the pins/anchors. In winds above 38km/h, the product should be folded immediately.
7. During rain or snowfall, excess water/snow must be systematically removed from the product.
8. Any soiling must be removed immediately with a damp cloth and warm water without the use of detergents. The use of high-pressure cleaners is prohibited.
9. The product should be cleaned and dry before disassembly. If, due to weather or other circumstances, the product is assembled wet and dirty, it should be disassembled again as soon as possible, dried and cleaned.
10. The product should be stored in a dry and clean place.


risk of ignition following
contact with a fire or
ignition source

risk of entanglement or
tripping over lashing
ropes

risk of overturning due
to incorrect installation
or strong winds

inappropriate use
e.g., climbing

risk of damage to the
power cable, e.g., on an
electric pump