

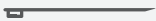
CONSTANT PRESSURE GATE VENTO®

INCLUDED



x 4

eyelet pins with lashings



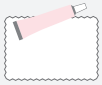
x 8

straight pins



x 1

mounting hammer



x 1

repair kit



x 1

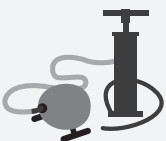
valve key



x 1

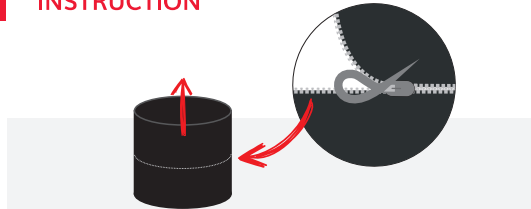
built-in cover

NEEDED

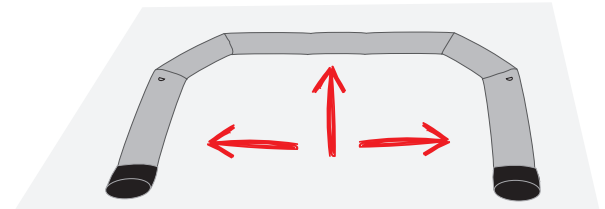


hand pump or electric

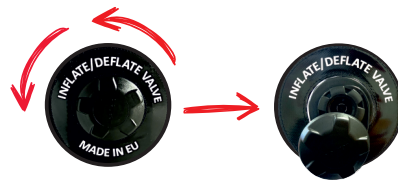
ASSEMBLY INSTRUCTION



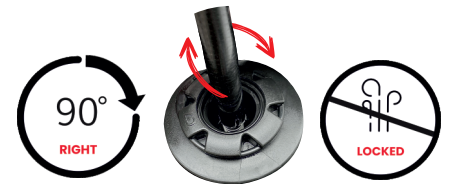
- 1** Undo the lock of the built-in cover connecting the gate bases.



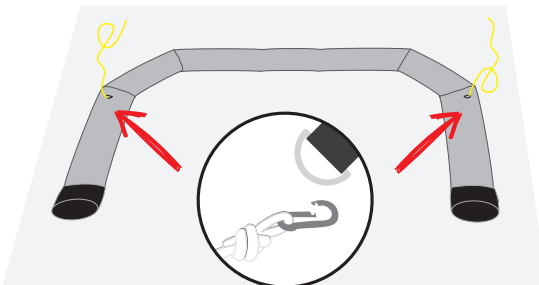
- 2** Unfold and stretch the gate to its full length on a flat, dry surface. If possible, use a sheet so as not to soil the covering.



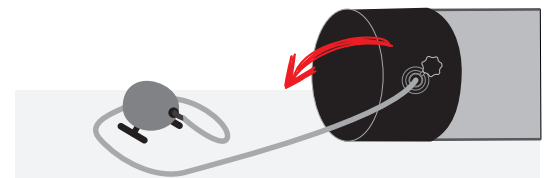
- 3** Find the inflate/deflate valve and unscrew the the plug.



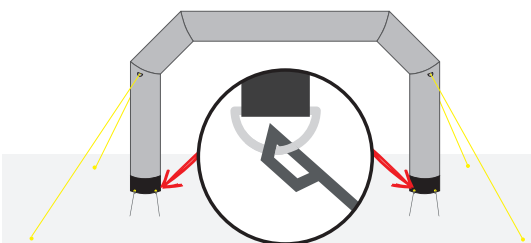
- 4** Lock the valve by turning the diaphragm needle by turning the needle of the diaphragm about 90° to the right with the dedicated key, this prevents air escaping. An unblocked valve will release air from the product!



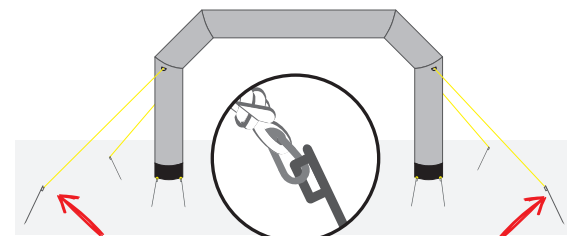
- 5** Hook the lashing lines to the eyelets using snap hooks.



- 6** Start filling with air using an electric pump.



- 7** Stand and stabilise the inflatable gate using the lashing ropes. Fix the gate legs with pins to the ground.



- 8** Fix the lines to the ground with pins. The lashing lines should be taut and stretched to their full length.

! For substrates that prevent the use of pins/anchors, dedicated weights for the lashing lines and balancing plates for the bases should be used.

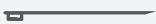
CONSTANT PRESSURE GATE VENTO®

INCLUDED



x 4

eyelet pins with lashings



x 8

straight pins



x 1

mounting hammer



x 1

repair kit



x 1

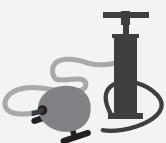
valve key



x 1

built-in cover

NEEDED



hand pump or electric

DISASSEMBLY INSTRUCTION

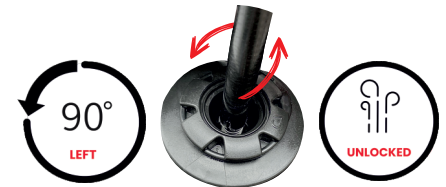
- 1 Remove all anchors/pins from the lashing lines.



- 3 Find the inflate/deflate valve and unscrew the plug.

- 5 Assemble and pack the mounting kit in the accessory bag.

- 2 Place the product on a flat and dry surface.



- 4 Unlock the valve by turning the diaphragm needle by about 90° to the left and start pumping the air out of the product.

- 6 Roll the product towards the pump valves into a built-up bag or pack it into a dedicated carry bag.

INSTRUCTION OF USE

1. Please read the product assembly/disassembly instructions before assembly.
2. When transporting, setting up and assembling the product, take special care to avoid damage to the product or injury during assembly.
3. Before disassembling the product, ensure that there are no sharp objects, tools, etc. with sharp edges in the area where the product will be assembled.
4. If using an electric pump, check the condition of the wires before connecting to the voltage to avoid electric shock.
5. Do not obstruct the safety valves that regulate the air pressure in the product.
6. During increasing gusts of wind, systematically check the seating of the pins/anchors. In winds above 38km/h, the product should be folded immediately.
7. During rain or snowfall, excess water/snow must be systematically removed from the product.
8. Any soiling must be removed immediately with a damp cloth and warm water without the use of detergents. The use of high-pressure cleaners is prohibited.
9. The product should be cleaned and dry before disassembly. If, due to weather or other circumstances, the product is assembled wet and dirty, it should be disassembled again as soon as possible, dried and cleaned.
10. The product should be stored in a dry and clean place.



risk of ignition following contact with a fire or ignition source



risk of entanglement or tripping over lashing ropes



risk of overturning due to incorrect installation or strong winds



inappropriate use e.g. climbing



risk of damage to the power cable, e.g. on an electric pump